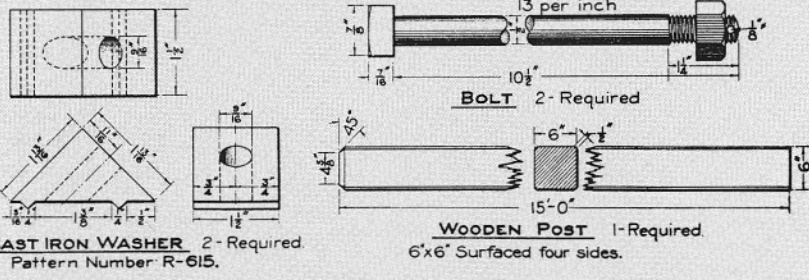
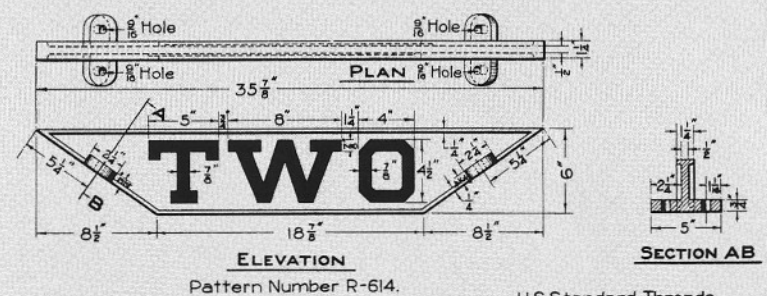
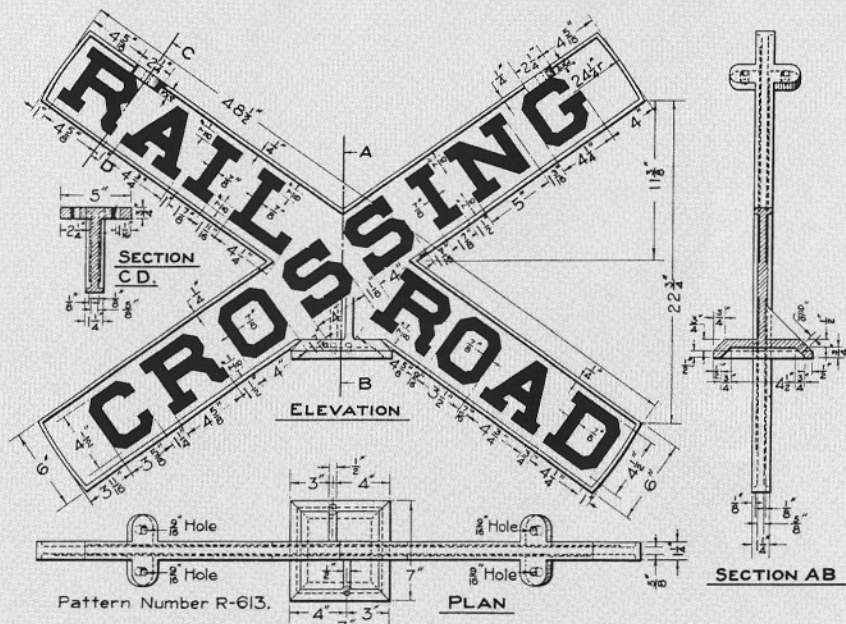


Standard Plans



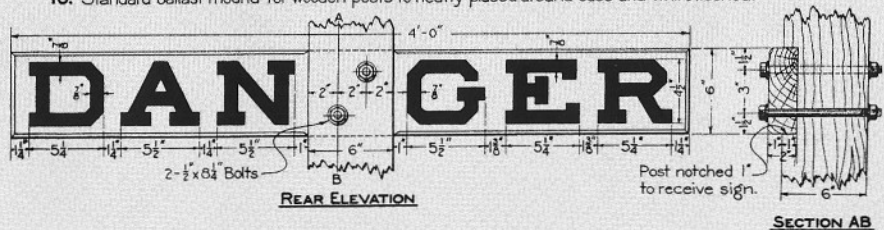
THIS SIGN, PATTERN NUMBERS R-613, R-614, R-615, TO BE USED IN ILLINOIS AND INDIANA:
its erection and maintenance in these states is governed by laws which are quoted below:

ILLINOIS: Every railroad corporation shall cause boards, well supported by posts or otherwise, to be placed and constantly maintained upon each public road or street where the same is crossed by its railroad on the same level. Said boards shall be elevated so as not to obstruct the travel, and to be easily seen by travelers. On each side of said boards shall be painted in capital letters of at least the size of nine inches each, the words Railroad Crossing or Look out for the cars. This does not apply to cities, towns, or villages unless required by the authorities thereof.

INDIANA: Crossing signs to be placed at right angles to the highway where possible, substantial upright posts 13 or more feet in length, 3 1/2 feet of which is in the ground, a board of wood or metal, no closer than 7 feet to the ground at right angles to this post, upon which shall appear the word 'Danger' in red or black letters; 2 other boards to be placed diagonally across each other just above the danger board, and on one of the two boards shall appear the word 'Railroad' and upon the other the word 'Crossing'; where two parallel railroads are crossed by the highway, and no further than 100 feet from each other, a board shall be placed at the top of the diagonal boards upon which the word 'Two' shall be written; the board on which the word 'danger' is written shall be at least 4 feet in length; the boards upon which the words 'Railroad Crossing' are written shall be not less than 5 feet in length; and where there are two railroads to be crossed the board with the word 'two' on it shall be not less than 2 feet in length; the size of all letters shall not be less than 6 inches high. Any other type of sign may be used with the consent of the Railroad Commission. The above does not apply to crossings within cities or incorporated towns. Sign indicated on this print approved by Public Service Commission of Indiana Oct. 1913.

NOTES:

1. Target to be of cast iron with 1/8" letters in relief on both sides.
2. Post to be of long leaf yellow pine surfaced four sides. Chamfering will be done in the field.
3. In ordering these signs cover targets, cast iron washer, and bolts with one requisition, and make separate requisition for posts.
4. Sign shall be located on the right side of highway which it governs, in such position that it will not interfere with travel, and blades of target must clear center line of track by at least 10 feet. Target shall be placed at right angles to center line of highway. Care must be taken to erect the post plumb. Supervisors will personally see that sign is erected in such position that it will be clearly visible when approached along the highway.
5. 'Danger' board to be of long leaf yellow pine dressed, placed at right angles to post not closer than 7 ft. to top of ballast mound. Letters to be stenciled in black on both sides.
6. Post to be planted 3'-6" in ground.
7. Paint letters, beading around targets, and post for a distance of 2'-6" above ground, black.
8. Paint body of targets, and remaining portion of post, white.
9. Section foreman will see that space within a radius of 5 ft. from post is kept free from grass.
10. Standard ballast mound for wooden posts to neatly placed around base and whitewashed.



SOUTHERN  RAILWAY

GRADE HIGHWAY CROSSING SIGN

ILLINOIS AND INDIANA

CORRECT:

J.H. Gartin

ASST. CHIEF ENGR. M.W. & S.

APPROVED:

B. Herman

CHIEF ENGINEER M.W. & S.

APPROVED:

E. Wagoner

VICE PRES. & GEN'L. MGR.

NOVEMBER 19, 1914.