

COVER SHEET

SOUTHERN RAILWAY

TRACK MAY & TERMINAL SURVEY

GREENVILLE, SC

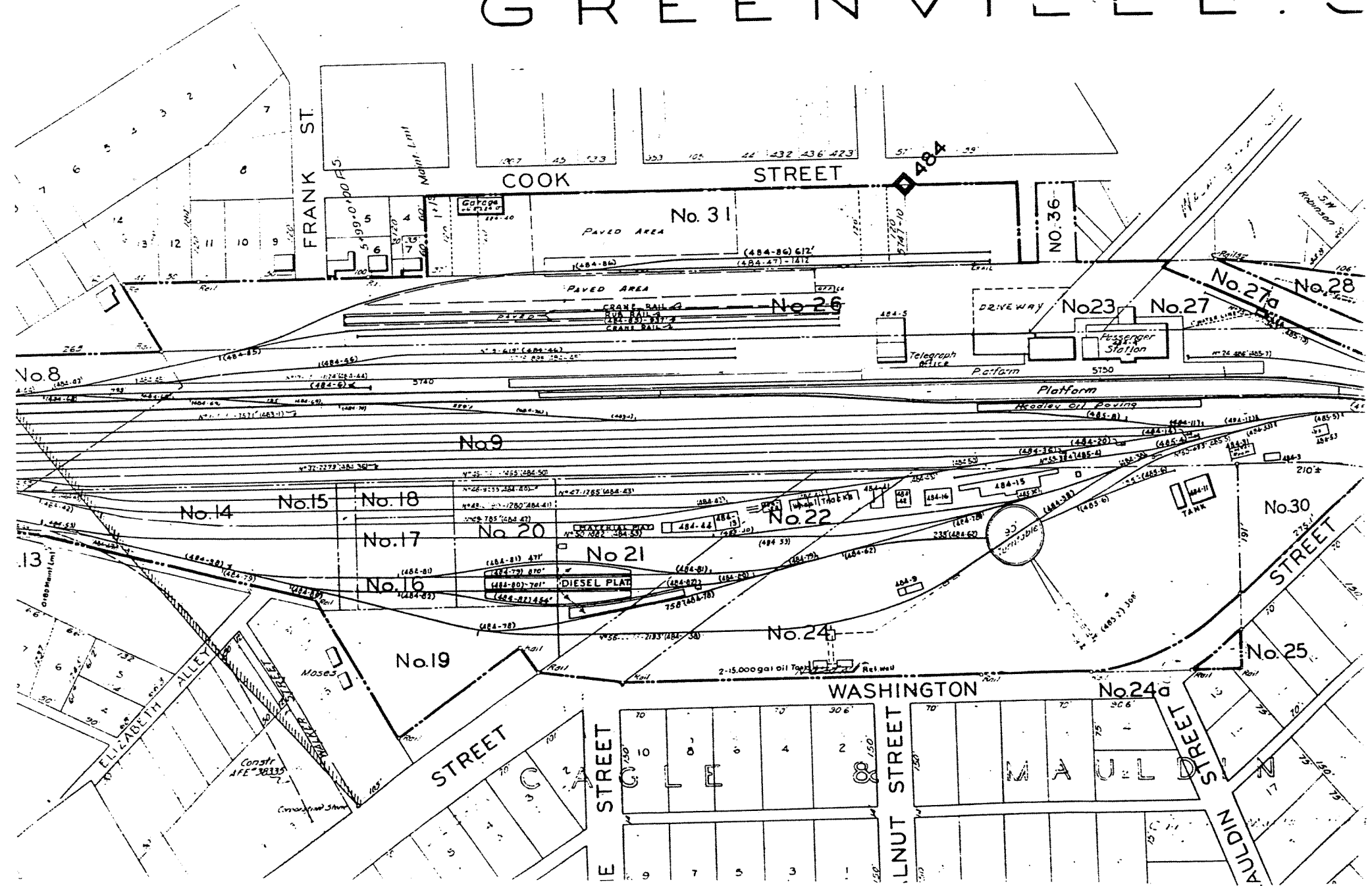
DATE Unknown

THIS DOCUMENT PROVIDED BY ALLEN STANLEY,
RAILROAD DATA EXCHANGE

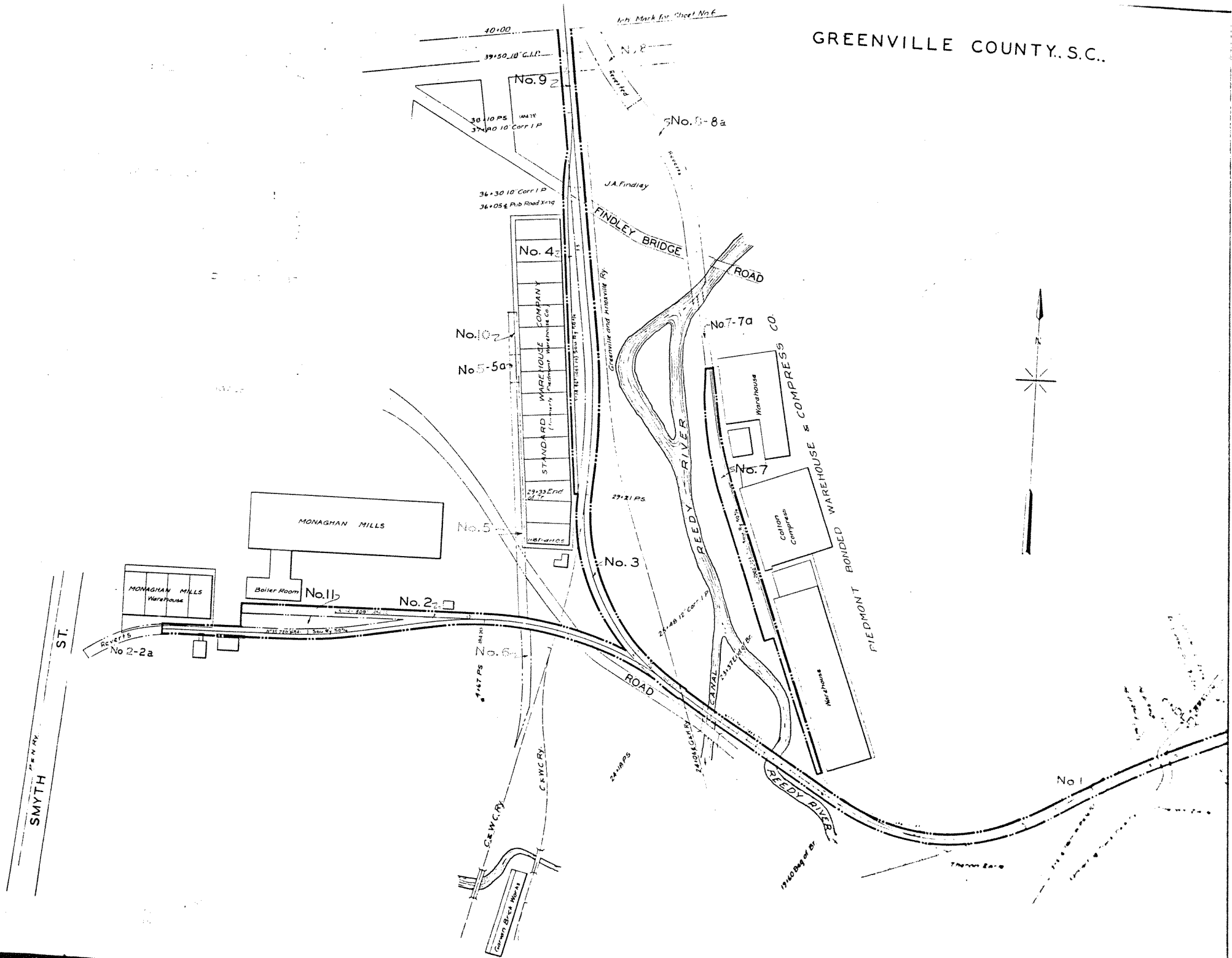
THIS PAGE BY: DONNIE DIXON
February 15, 2010

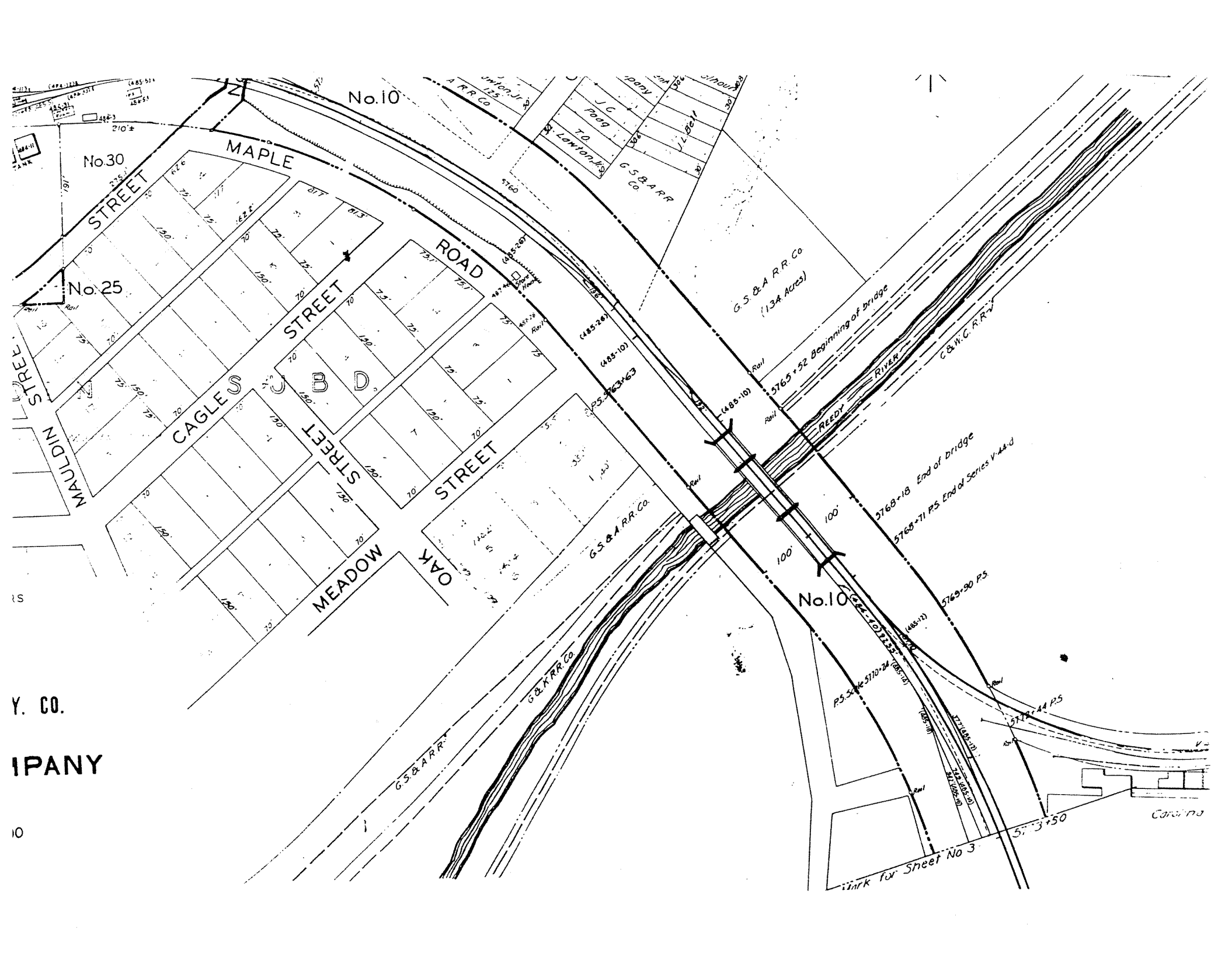


GREENVILLE S



GREENVILLE COUNTY, S.C.





No. 10

No. 30

No. 25

MAPLE ROAD

STREET

STREET

CAGLE STREET

STREET

MEADOW STREET

OAK STREET

MAULDIN STREET

G.S. & A. R.R. Co.

No. 10

G.S. & A. R.R. Co.

G.S. & A. R.R. Co.

G.S. & A. R.R. Co.
(134 Acres)

REEDY RIVER

C&N.C. R.R.

5765+52 Beginning of bridge
5768+18 End of bridge
5768+71 PS End of Series V-44-d

5769+90 PS

PS 5763+63
PS 5765+52
PS 5768+18
PS 5768+71
PS 5769+90
PS 5771+14

5771+14 PS

5773+50

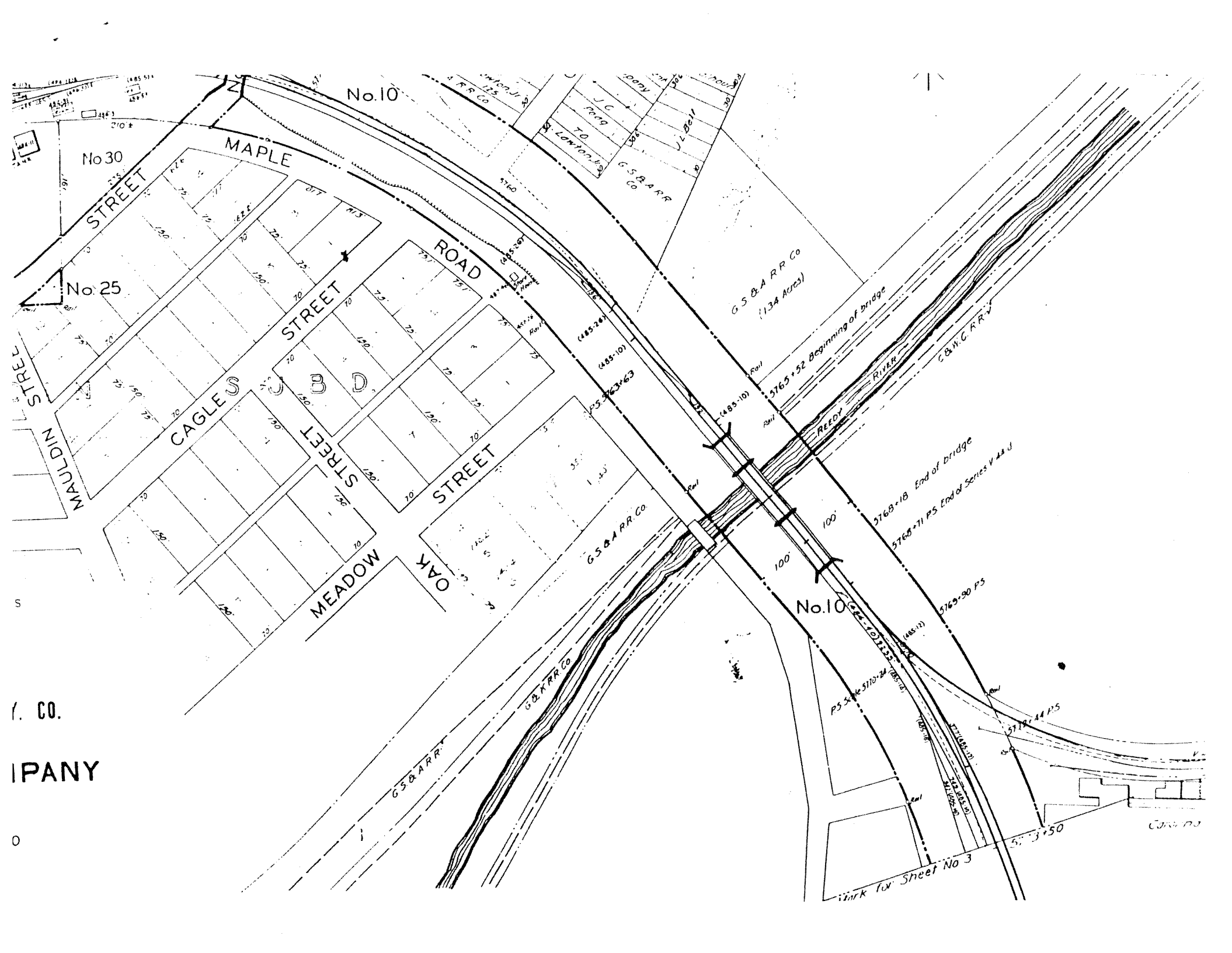
Link for Sheet No 3

Carolina

Y. CO.

IPANY

10



No. 10

No. 30

No. 25

MAPLE ROAD

STREET

STREET

ROAD

CAGLE STREET

STREET

STREET

MEADOW STREET

OAK STREET

G.S. & A. R.R. Co.
(134 Acres)

No. 10

REEDY RIVER

Beginning of Bridge

End of Bridge

PS End of Series V & U

5765+90 PS

5768+18 PS

5768+71 PS

5771+44 PS

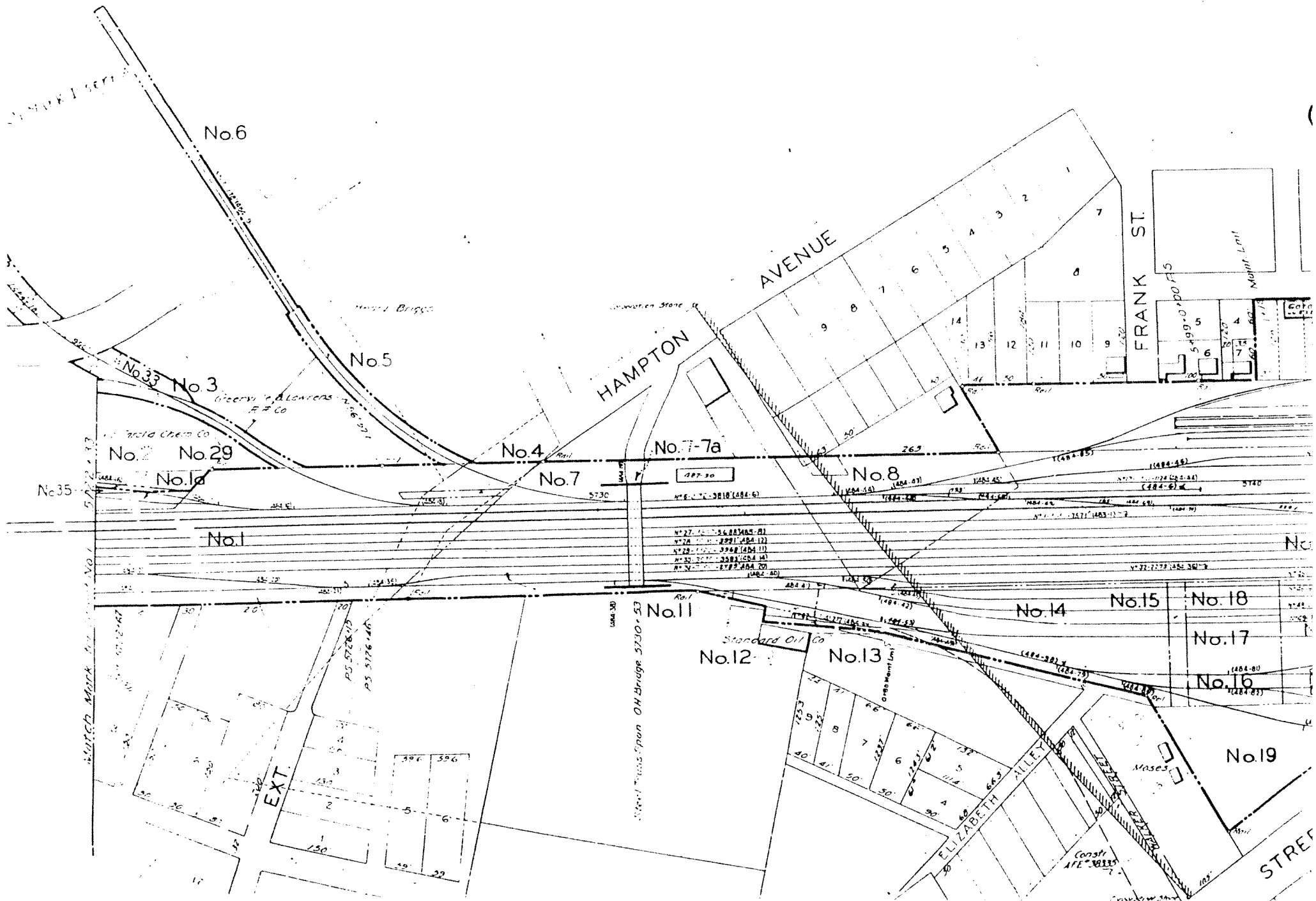
5773+50

Link to Sheet No 3

(. CO.

IPANY

0



No.6

No.5

HAMPTON AVENUE

FRANK ST.

No.2 No.29

No.4

No.7-7a

No.8

No.7

No.1

No.11

No.12

No.13

No.14

No.15

No.18

No.17

No.16

No.19

ELIZABETH ALLEY

STREET

Match Mark

No.35

Wald Green Co

Licery & Lenders

Briggs

Western Stone

Maint. Limit

Standard Oil Co

Const

Match Mark

EXT.

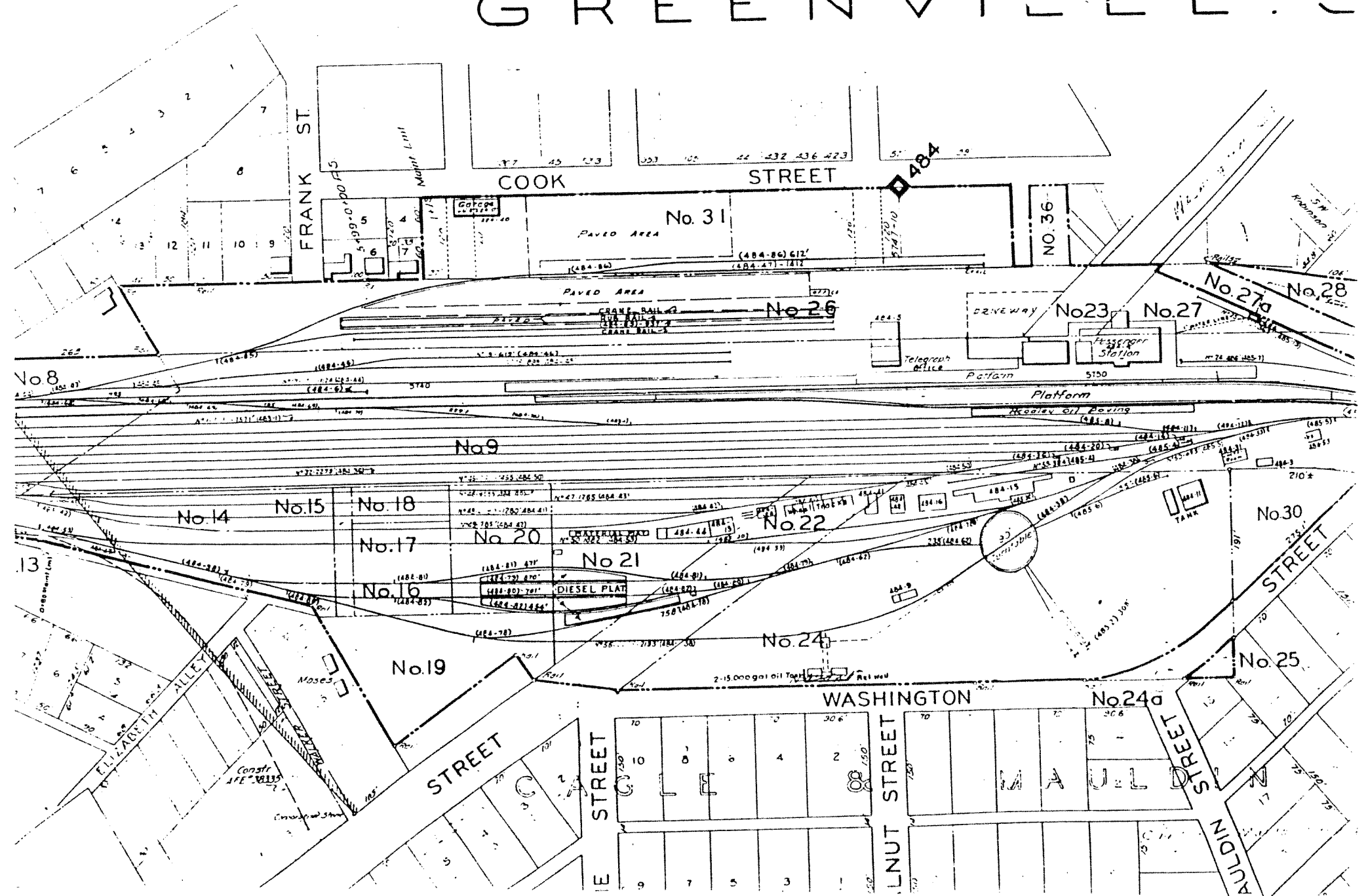
Street Transpon OH Bridge

Orphanment

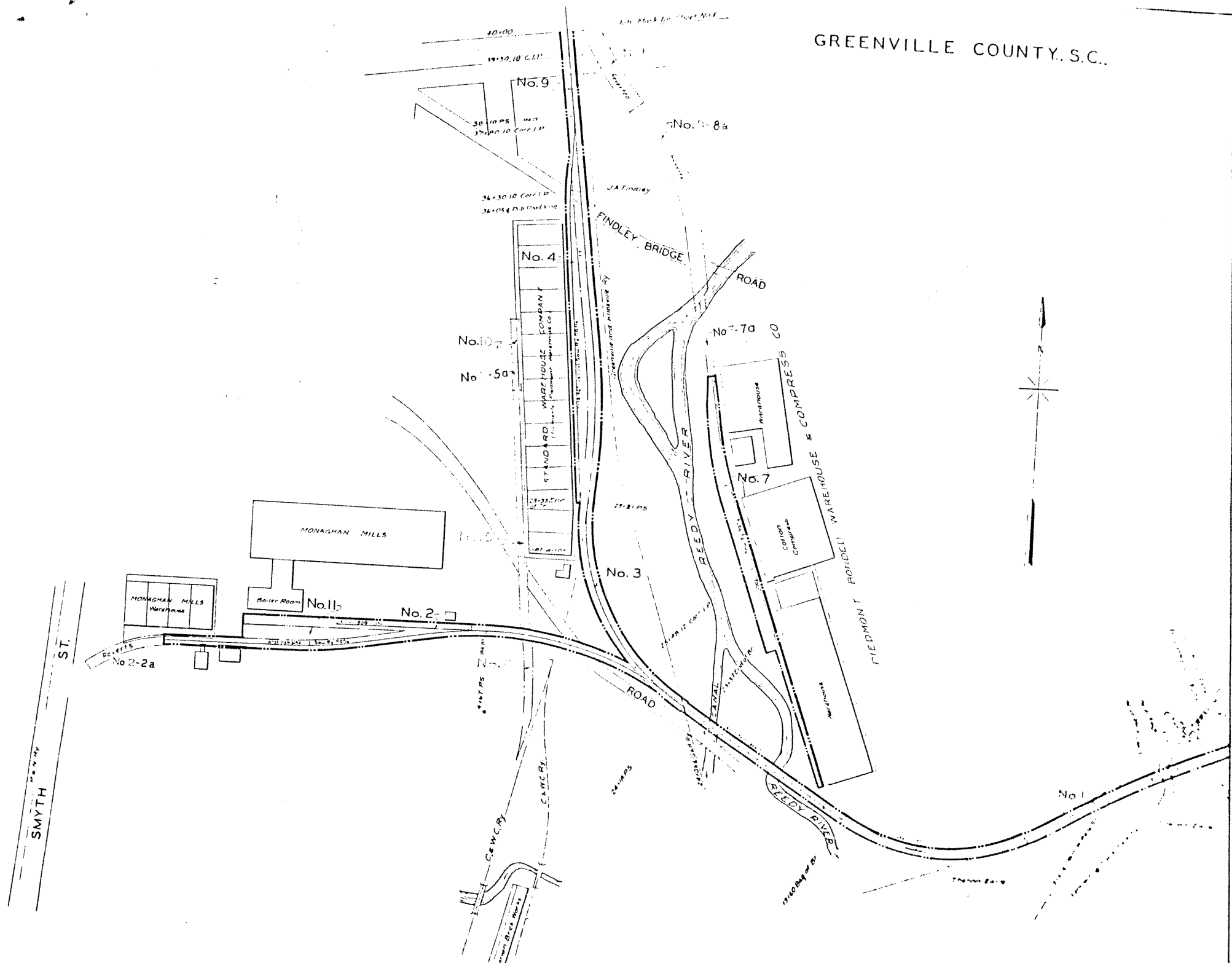
Const

STREET

GREENVILLE S



GREENVILLE COUNTY, S.C.



40+00

19+50, 18 G.L.P.

No. 9

38+10 P.S. 1947
37+00 TO CORNER

No. 9-8a

36+30 TO CORNER
36+05 1/2 P.B. DIST. 1910

FINDLEY BRIDGE

No. 4

STANDARD WAREHOUSE COMPANY
17+00 TO CORNER
16+00 TO CORNER
15+00 TO CORNER
14+00 TO CORNER
13+00 TO CORNER
12+00 TO CORNER
11+00 TO CORNER
10+00 TO CORNER
9+00 TO CORNER
8+00 TO CORNER
7+00 TO CORNER
6+00 TO CORNER
5+00 TO CORNER
4+00 TO CORNER
3+00 TO CORNER
2+00 TO CORNER
1+00 TO CORNER

No. 10

No. 5a

No. 7a CO

No. 7

MONAGHAN MILLS

Boiler Room

No. 11

No. 2

MONAGHAN MILLS Warehouse

No. 2-2a

No. 3

PIEDMONT ROAD WAREHOUSE & COMPRESS CO

ST.

SMYTH

