

COVER SHEET

SOUTHERN RAILWAY

STANDARD PLANS

CLAY PICK

1975

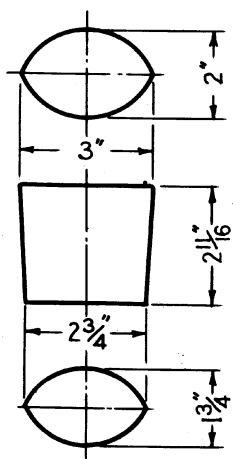
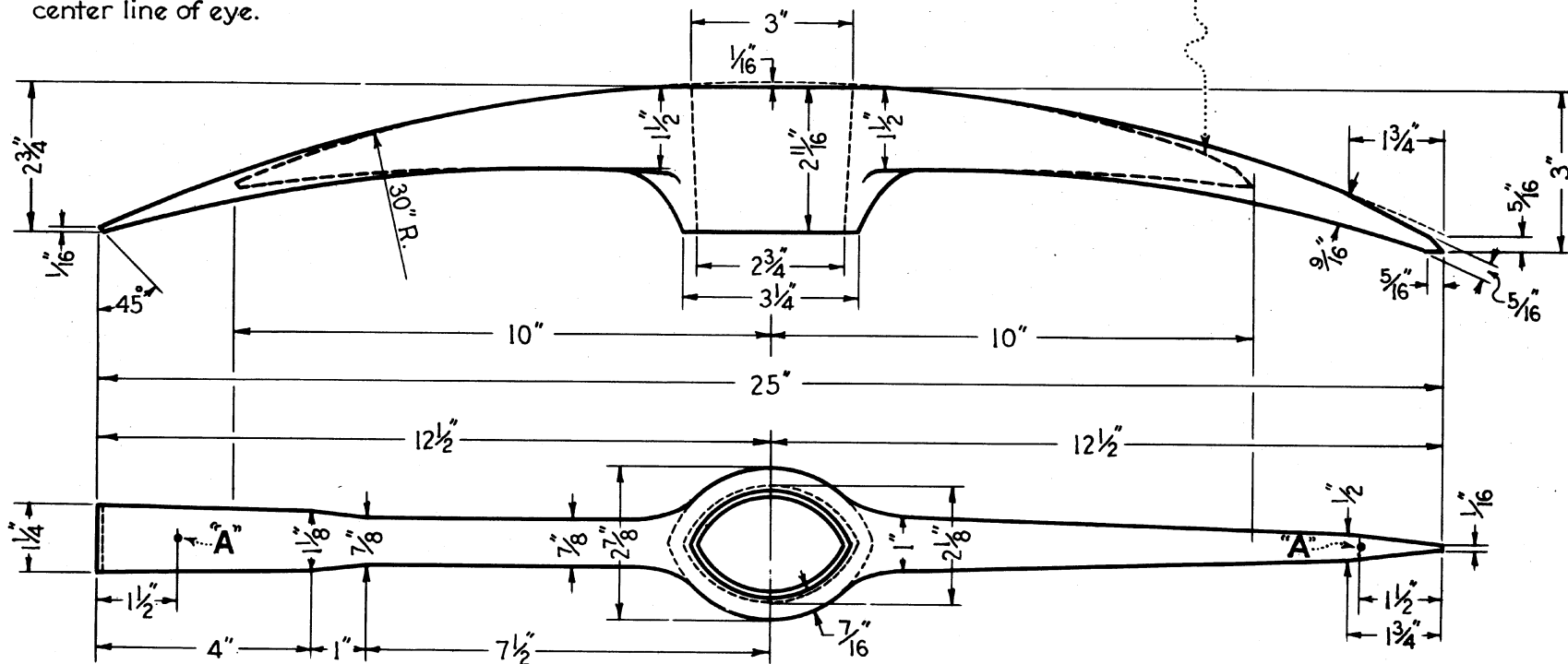
THIS DOCUMENT PROVIDED BY ALLEN STANLEY,
RAILROAD DATA EXCHANGE

THIS PAGE BY: DONNIE DIXON
February 15, 2010



30" radius of back to be continuous, except where flattened over eye. Radius to be coincident with center line of eye.

Dashed lines indicate reclaiming limit of tool.



DETAIL OF EYE

"A" indicates points where Brinell hardness is to be taken.
 Material :- O.H. Steel, Brinell 425-500.
 Approx. weight :- 7 Lbs.
 Tool to be stamped "Southern Ry. Co."

SOUTHERN RAILWAY SYSTEM

CLAY PICK

FEBRUARY 1, 1975

OFFICE OF ASST. V. P. M.W. & S.
 Atlanta, Georgia