

COVER SHEET

SOUTHERN RAILWAY

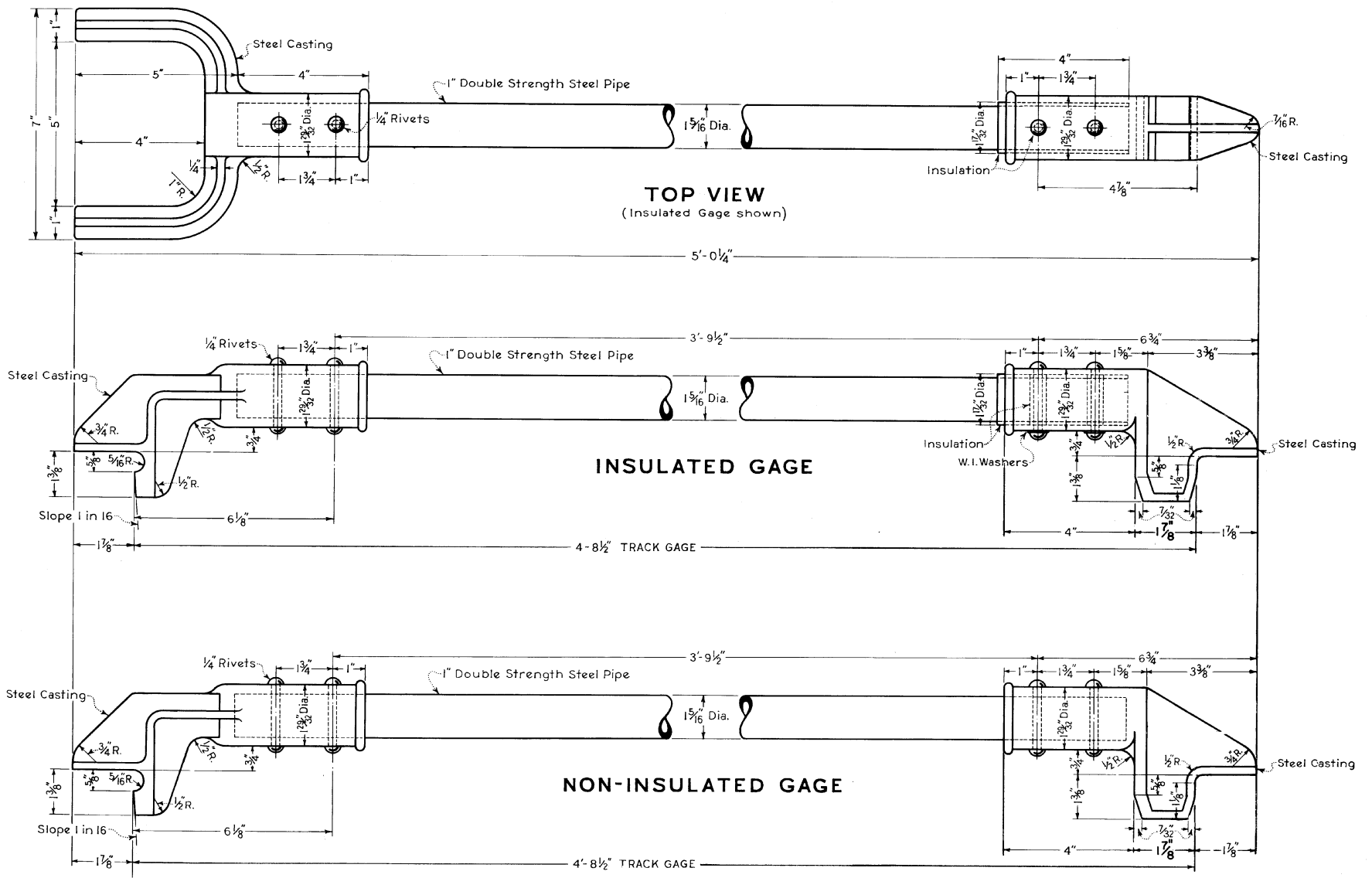
STANDARD PLANS
TRACK GAGES

1975

THIS DOCUMENT PROVIDED BY ALLEN STANLEY,
RAILROAD DATA EXCHANGE

THIS PAGE BY: DONNIE DIXON
February 15, 2010





NOTES:

4'-8 1/2" Track Gage shown is identical with A.R.E.A. Track Gage, Plan No. 20-45, dated March, 1936.
Manufacturer will supply this type of gage only, unless otherwise directed.

Insulating fibre shall conform to A.A.R. Signal Sect. Specification No. 13-39, or later issues.
Insulate at both ends of gage when required.
Center line to be marked on gage when required.
Tolerances:- 2% on length, 5% on cross section. No tolerance allowed in gage distance.

SOUTHERN RAILWAY SYSTEM

TRACK GAGES

FEBRUARY 1, 1975

OFFICE OF ASST. V.P. M.W. & S.
Atlanta, Georgia